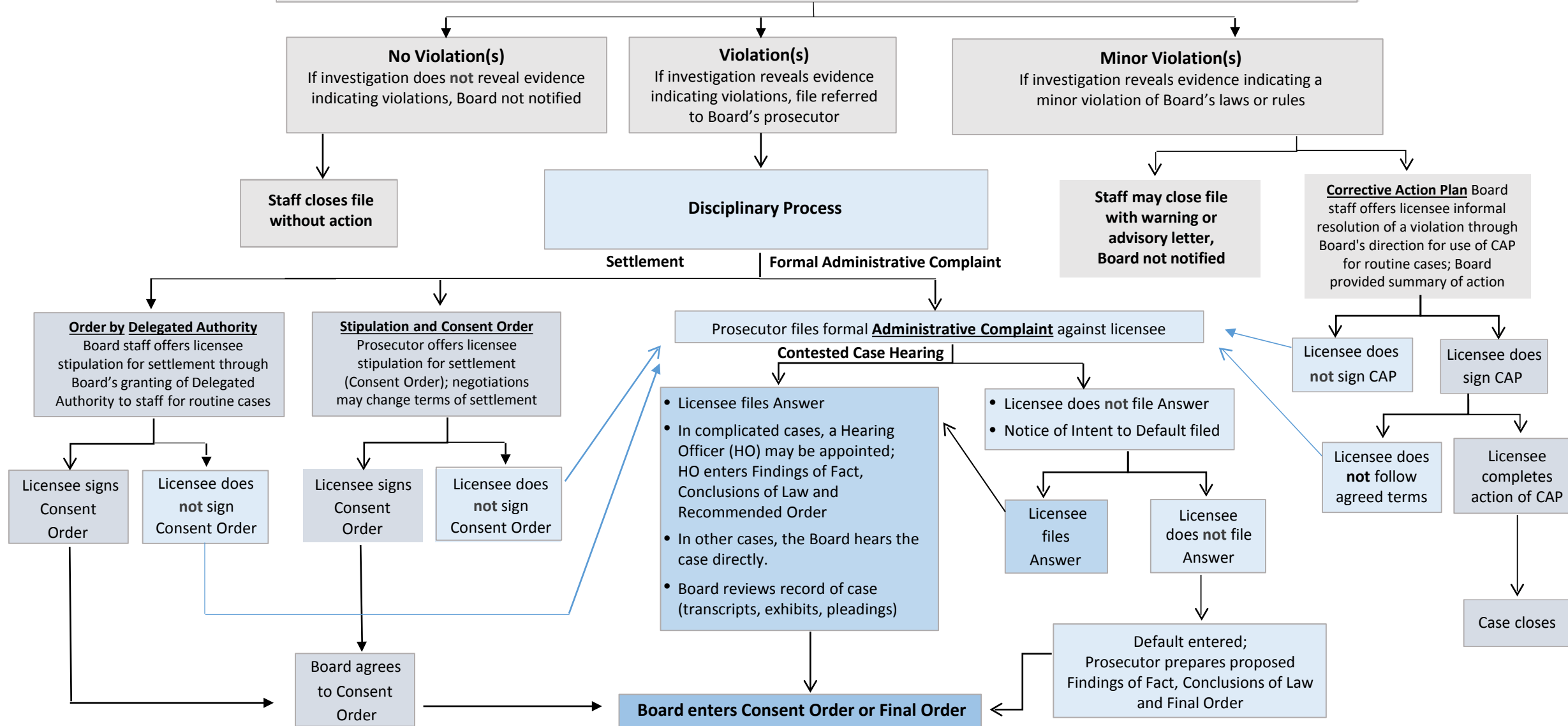


Board of Pharmacy Complaint Resolution Process

A concern is filed with the Board or arises from an inspection; investigation conducted if: (1) Board has **jurisdiction** and (2) concern indicates a **possible violation** of Board's laws or rules. Investigator may interview the submitter, licensee*, and witnesses, gather evidence, and prepare report.



*Licensee - a person who is licensed or registered by the board